



Rosner & Associates

Office

Exclusive Listing

Lease

Courthouse Corporate Center
320 Carleton Avenue
Central Islip, NY 11722

Property Information

Min Contiguous SF: 1,070
Max Contiguous SF: 11,149
Max Available SF: 23,547
Gross Leasable Area: 175,000
Lease Rate PSF: \$17.50
Lease Type: + Electric
Possession: Immediate
of Stories: 9
Fuel: Gas
Parking: 5.5 per 1,000
Lot Size (acres): 11
Zoning: Office
Year Built: 2003



Main Photo

Landlord Special Leasing Rate Just Announced - \$17.50 per square foot, the Courthouse Corporate Center offers the most affordable high-quality office space on Long Island. A beautiful lobby and well-appointed common areas welcome visitors as they take high-speed elevators to upper floors. The facility has energy efficient 'operable' windows, extensively landscaped grounds with plaza seating. Amenities include a café on premises, conference room, storage/archive space, and abundant on-site parking. A computerized security system allows 24/7 access to the building. Compare with other first-class buildings, and you'll see why Courthouse Corporate Center is the affordable alternative.

The property is immediately accessible from the Southern State Parkway (Exit 43A) and the Long Island Expressway (Exit 56S). It is in walking distance to Federal and County courts, and just blocks from a major retail center that includes Target, Home Depot, Carraba's and more.

Space Availability

Suite No.	Min Avail Space	Max Avail Space	Rent PSF	Electric PSF	Availability	Description
P 3rd	1,070	1,070	\$17.50	\$3.00	Immediate	
P 7th	1,331	1,331	\$17.50	\$3.00	Immediate	Eastern view. New Common Areas!!
P 6th	1,371	1,371	\$17.50	\$3.00	Immediate	Western side of Bldg. Great views.
P 6th	1,481	1,481	\$17.50	\$3.00	Immediate	Eastern views of CitiPark Field! Windows, windows, windows!
P 1st	1,749	1,749	\$17.50	\$3.00	Immediate	Ground floor space, just off lobby. High level of finish.
P 7th	2,000	5,449	\$17.50	\$3.00	Immediate	Corner space with north, east and western views
P Penthouse	6,000	11,149	\$17.50	\$3.00	Immediate	Terrific views

For Information, please contact: Andy Dorman (631) 761-6883 Direct Dial Email: adorman@cbcli.com
 Lee Rosner, CCIM SIOR (631) 761-6886 Direct Dial Email: rosner@cbcli.com

3124 Expressway Dr S., Islandia, NY 11749 631-232-4400 Tel 631-2132-2438 Fax www.cbcli.com

All information furnished regarding property for sale, rental or financing is from sources deemed reliable. No warranty or representation, express or implied, is made as to the accuracy of the information contained herein, and same is submitted subject to errors, omissions, change of price, rental or other conditions, withdrawal without notice, and to any special listing conditions, imposed by our principals. 50/50 commission split to co-broker on all CBCL&A Exclusive Listings.

Each office independently owned and operated.



Rosner & Associates



Alternate Photo



Aerial View

For Information, please contact:

Andy Dorman

(631) 761-6883 Direct Dial

Email: adorman@cbcli.com

Lee Rosner, CCIM SIOR

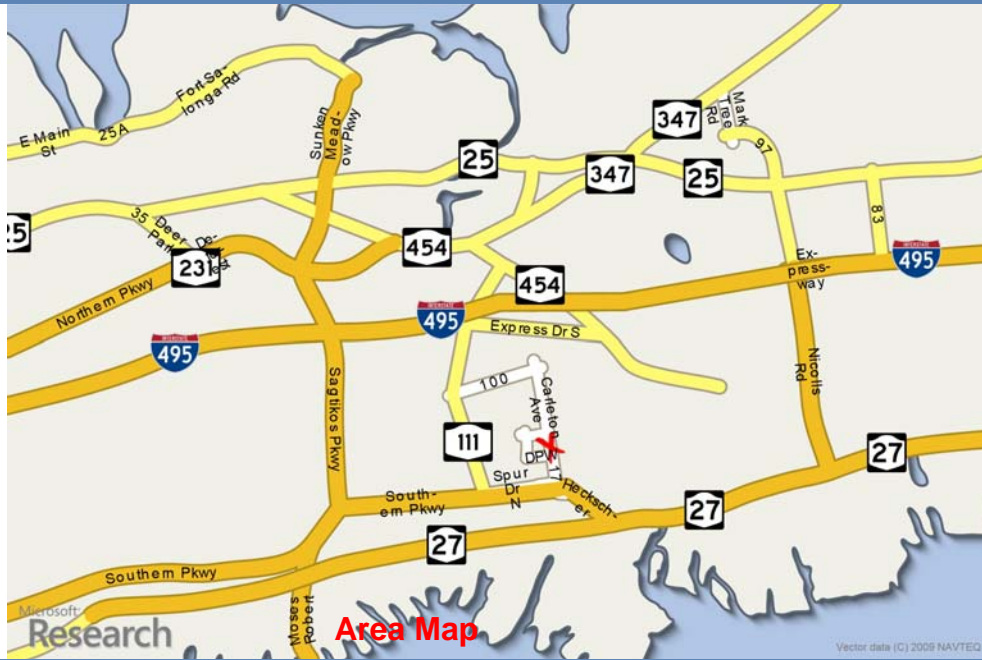
(631) 761-6886 Direct Dial

Email: rosner@cbcli.com

3124 Expressway Dr S., Islandia, NY 11749 631-232-4400 Tel 631-2132-2438 Fax www.cbcli.com

All information furnished regarding property for sale, rental or financing is from sources deemed reliable. No warranty or representation, express or implied, is made as to the accuracy of the information contained herein, and same is submitted subject to errors, omissions, change of price, rental or other conditions, withdrawal without notice, and to any special listing conditions, imposed by our principals. 50/50 commission split to co-broker on all CBCR&A Exclusive Listings.

Each office independently owned and operated.

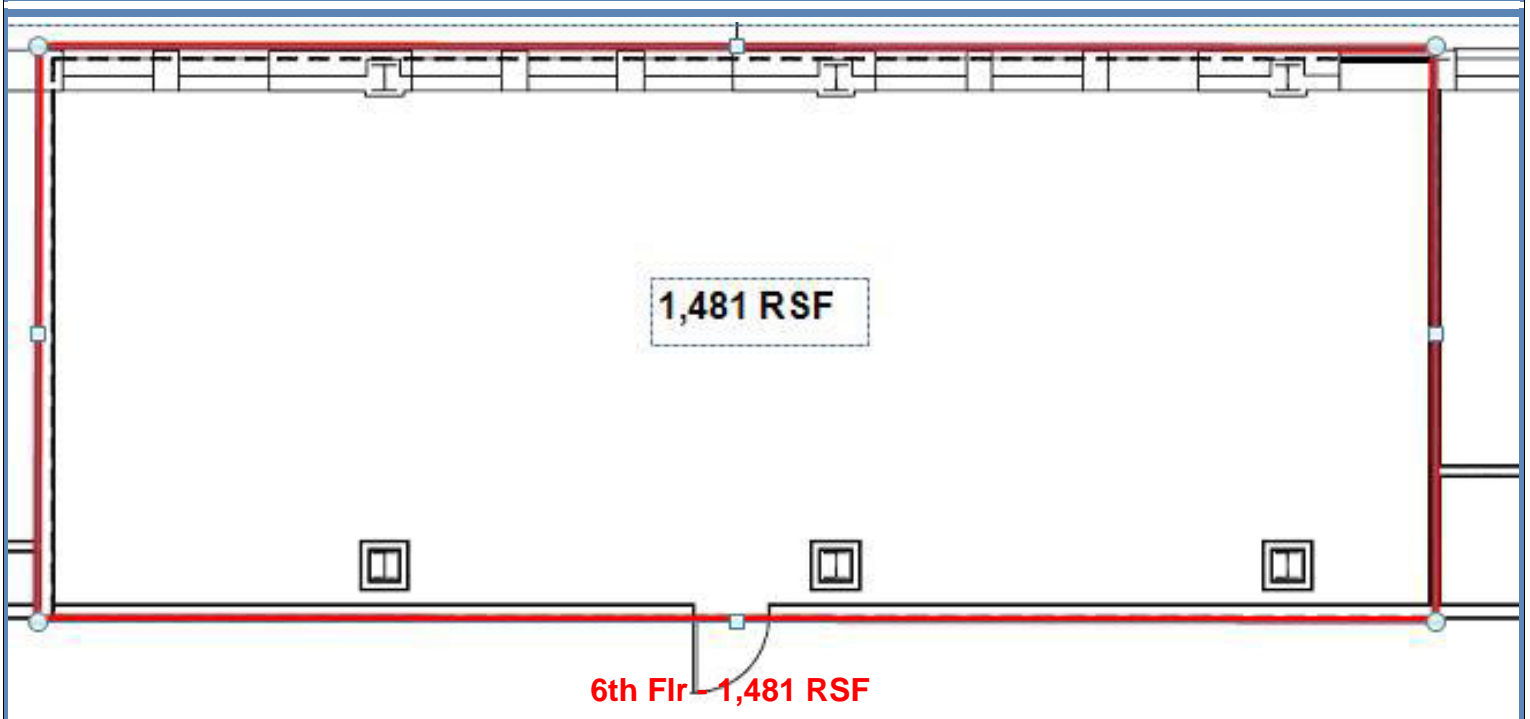
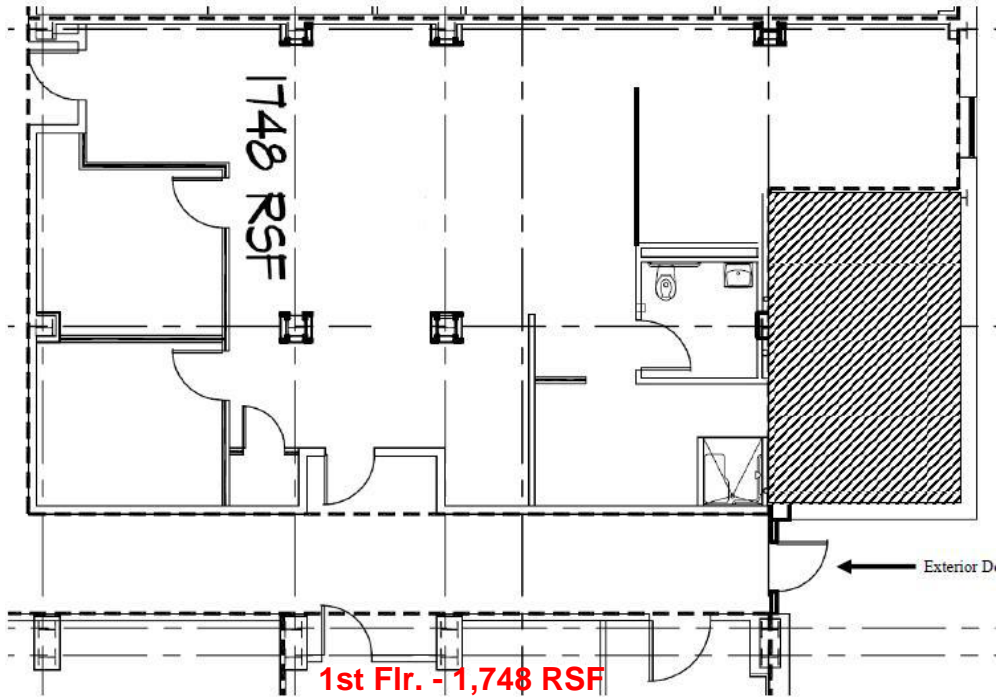


For Information, please contact: Andy Dorman (631) 761-6883 Direct Dial Email: adorman@cbcli.com
Lee Rosner, CCIM SIOR (631) 761-6886 Direct Dial Email: lorosner@cbcli.com

3124 Expressway Dr S., Islandia, NY 11749 631-232-4400 Tel 631-2132-2438 Fax www.cbcli.com

All information furnished regarding property for sale, rental or financing is from sources deemed reliable. No warranty or representation, express or implied, is made as to the accuracy of the information contained herein, and same is submitted subject to errors, omissions, change of price, rental or other conditions, withdrawal without notice, and to any special listing conditions, imposed by our principals. 50/50 commission split to co-broker on all CBCR&A Exclusive Listings.

Each office independently owned and operated.

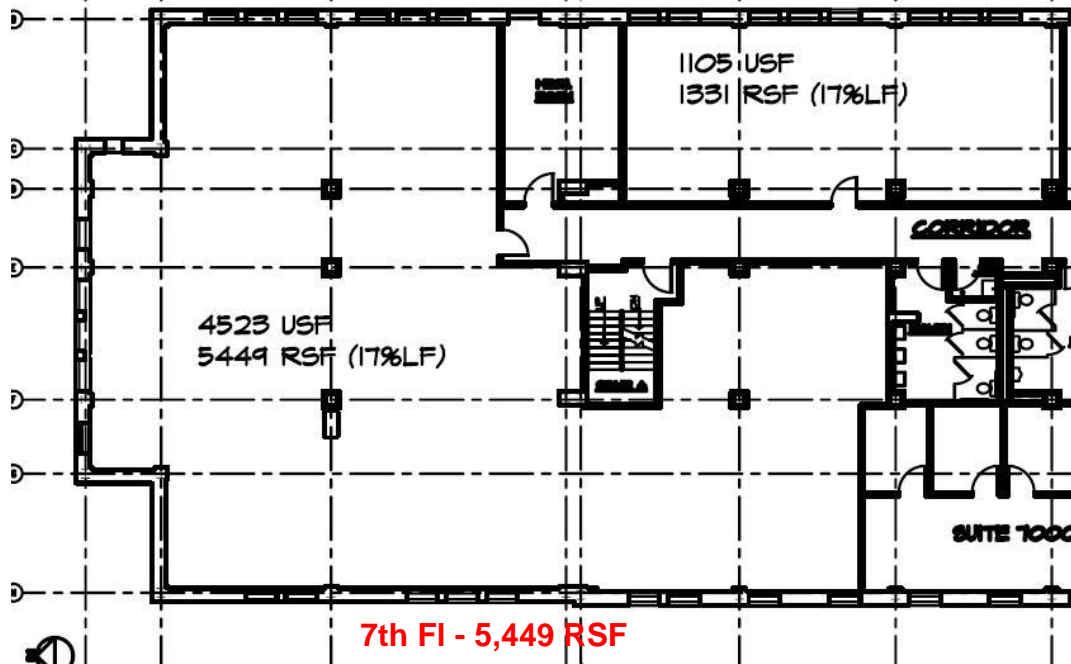


For Information, please contact: Andy Dorman (631) 761-6883 Direct Dial Email: adorman@cbcli.com
Lee Rosner, CCIM SIOR (631) 761-6886 Direct Dial Email: lorosner@cbcli.com

3124 Expressway Dr S., Islandia, NY 11749 631-232-4400 Tel 631-2132-2438 Fax www.cbcli.com

All information furnished regarding property for sale, rental or financing is from sources deemed reliable. No warranty or representation, express or implied, is made as to the accuracy of the information contained herein, and same is submitted subject to errors, omissions, change of price, rental or other conditions, withdrawal without notice, and to any special listing conditions, imposed by our principals. 50/50 commission split to co-broker on all CBCR&A Exclusive Listings.

Each office independently owned and operated.



For Information, please contact:

Andy Dorman

(631) 761-6883 Direct Dial

Email: adorman@cbcli.com

Lee Rosner, CCIM SIOR

(631) 761-6886 Direct Dial

Email: lorosner@cbcli.com

3124 Expressway Dr S., Islandia, NY 11749 631-232-4400 Tel 631-2132-2438 Fax www.cbcli.com

All information furnished regarding property for sale, rental or financing is from sources deemed reliable. No warranty or representation, express or implied, is made as to the accuracy of the information contained herein, and same is submitted subject to errors, omissions, change of price, rental or other conditions, withdrawal without notice, and to any special listing conditions, imposed by our principals. 50/50 commission split to co-broker on all CBCR&A Exclusive Listings.

Each office independently owned and operated.